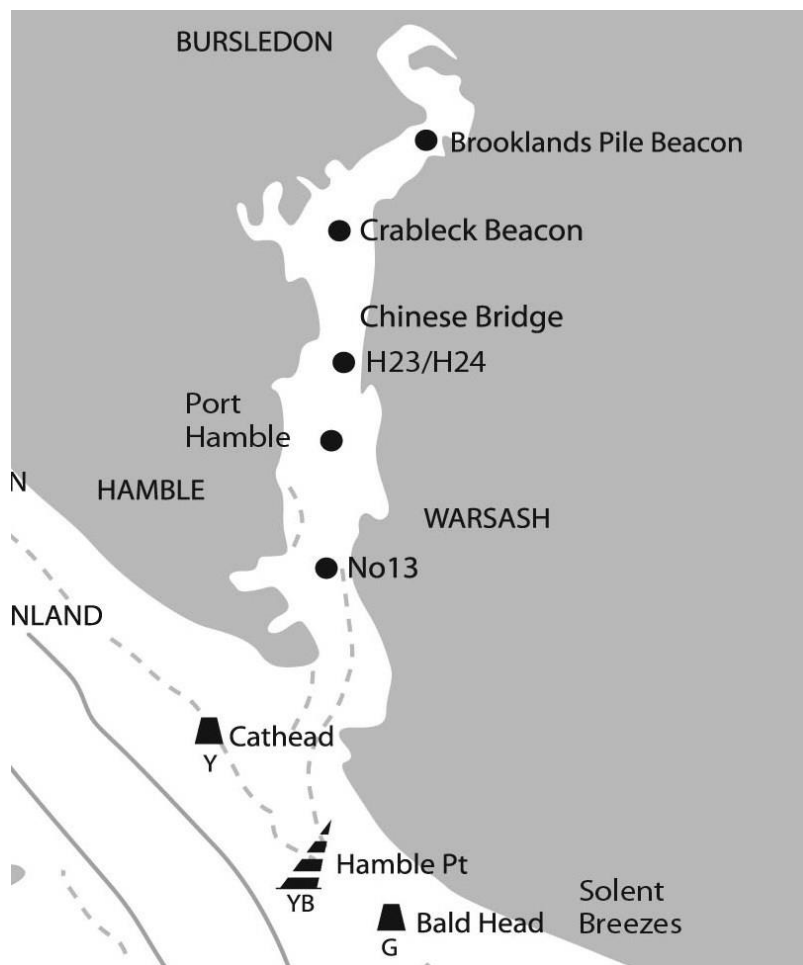


**Swanwick, Bursledon and Warsash Regatta 2021**  
**Saturday 28<sup>th</sup> August**

**Sailing Instructions – Dinghy Race Courses**



**Course 1:**

- Lands End Starting Line (Brooklands Pile beacon)
- Inflatable mark in vicinity of Crableck Beacon above Mercury Marina (P)
- Finish. Distance 1.2 miles.

**Course 2:**

- Lands End Starting Line (Brooklands Pile beacon)
- Inflatable mark between piles H23 and H24 just below Chinese Bridge (P)
- Finish. Distance 2 miles

**Course 3:**

- Lands End Starting Line (Brooklands Pile beacon)
- Inflatable mark between piles HP1 and D15 just below Port Hamble Marina (P)
- Finish. Distance 3 miles

**Course 4:**

- Lands End Starting Line (Brooklands Pile beacon)
- Green Starboard Channel mark No 13 off Warsash Sailing Club (P)
- Finish. Distance 4 miles.

**Course 5:**

- Lands End Starting Line (Brooklands Pile beacon)
- Hamble Point (P)
- Finish. Distance 5.6 miles.

**Course 6:**

- Lands End Starting Line (Brooklands Pile beacon)
- Hamble Point (P)
- Green Starboard Channel Mark No 13 off Warsash Sailing Club (P)
- Hamble Point (P)
- Finish. Distance 7.2 miles

**Courses 7, 8 and 9:**

- To be decided on the day and displayed on the Committee Boat.